

A three bedroom mid terraced property which is offered to the market for rent on an unfurnished basis. The home features neutral decoration, upgraded flooring to most rooms and further benefits from uPVC double glazing and gas central heating. The internal layout comprises: entrance vestibule, lounge, full width kitchen/diner, rear lobby, ground floor bathroom, three bedrooms and externally to the rear is an enclosed yard with gated access. Oakley Gardens is situated between Chester Road and Chatham Road, with easy access to schools and amenities.

UNFURNISHED/NO SMOKERS/PETS CONSIDERED

REQUIRED EARNINGS: Tenants £16,500pa; Guarantor, if required £19,800pa

BOND £634

(Application is subject to a Holding Fee - please refer to our website for further details)

Oakley Gardens, Hartlepool, TS24 8QW

3 Bed - House - Mid Terrace

£550 Per Calendar Month

EPC Rating: C

Council Tax Band: A

Tenure: Freehold



Oakley Gardens, Hartlepool, TS24 8QW

GROUND FLOOR

ENTRANCE

Accessed via uPVC double glazed entrance door with fanlight above, staircase to the first floor, single radiator, door through to:

FRONT LOUNGE

13'4 x 11'10 (4.06m x 3.61m)

uPVC double glazed window to the front aspect, fire surround, fitted carpet, coving to ceiling, double radiator, access to:

KITCHEN

14'10 x 7'4 (4.52m x 2.24m)

Fitted with a range of units to base and wall level with brushed stainless steel handles and contrasting work surfaces incorporating an inset single drainer stainless steel sink unit with mixer tap, space for appliances including recess for washing machine, Ideal exclusive gas central heating boiler, 'laminate' effect vinyl flooring, uPVC double glazed window to the rear aspect, under stairs storage cupboard, single radiator.

REAR LOBBY

uPVC double glazed door to the rear yard, 'laminate' effect vinyl flooring, access to ground floor bathroom.

GROUND FLOOR BATHROOM/WC

7'2 x 5'6 (2.18m x 1.68m)

Fitted with a three piece white suite comprising: panelled bath with dual taps, pedestal wash hand basin with dual taps, low level WC, tiling to splashback, panelling to ceiling, uPVC double glazed window to the side aspect, 'laminate' effect vinyl flooring, extractor fan, double radiator.

FIRST FLOOR

LANDING

Access to three bedrooms, fitted carpet, hatch to loft space.

BEDROOM ONE

14'11 x 10'5 (4.55m x 3.18m)

A good size master bedroom with a large uPVC double glazed window to the front aspect, fitted carpet, coving to ceiling, convactor radiator.

BEDROOM TWO

10'7 x 8'1 (3.23m x 2.46m)

Built-in storage cupboard, uPVC double glazed window to the rear aspect, fitted carpet, convactor radiator.

BEDROOM THREE

7'6 x 6'5 (2.29m x 1.96m)

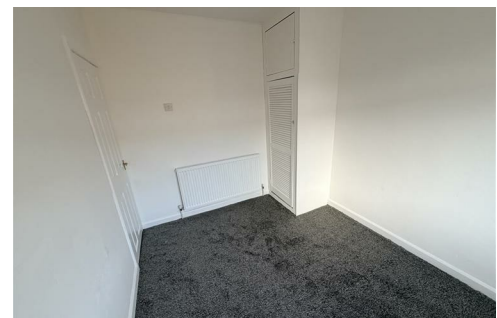
uPVC double glazed window to the rear aspect, fitted carpet, convactor radiator.

EXTERNALLY

The property features an enclosed yard to the rear with gated access.

NB

Floorplans and title plans are for illustrative purposes only. All measurements, walls, doors, window fittings and appliances, their sizes and locations, are approximate only. They cannot be regarded as being a representation by the landlord, nor their agent.



For clarification we wish to inform prospective purchasers that we have prepared these sales particulars as a general guide. We have not carried out a detailed survey, nor tested the services, appliances and specific fittings. Room sizes should not be relied upon for carpets and furnishings, if there are important matters which are likely to affect your decision to buy, please contact us before viewing the property. Smith & Friends Estate Agents can recommend financial services, surveying, conveyancing and removal services to sellers and buyers. Smith & Friends Estate Agents staff may benefit from referral incentives relating to these services.

Energy Efficiency Rating		
	Current	Potential
Very energy efficient - lower running costs		
(92 plus) A		84
(81-91) B		
(69-80) C	69	
(55-68) D		
(39-54) E		
(21-38) F		
(1-20) G		
Not energy efficient - higher running costs		
England & Wales		EU Directive 2002/91/EC

106 York Road, Hartlepool, TS26 9DE
01429 891100
hartlepool@smith-and-friends.co.uk
www.smith-and-friends.co.uk

